

Your Kerbside collection day is:  
**WEDNESDAY**



Ready to  
take the  
**ONE BLACK  
BAG A WEEK**  
challenge?

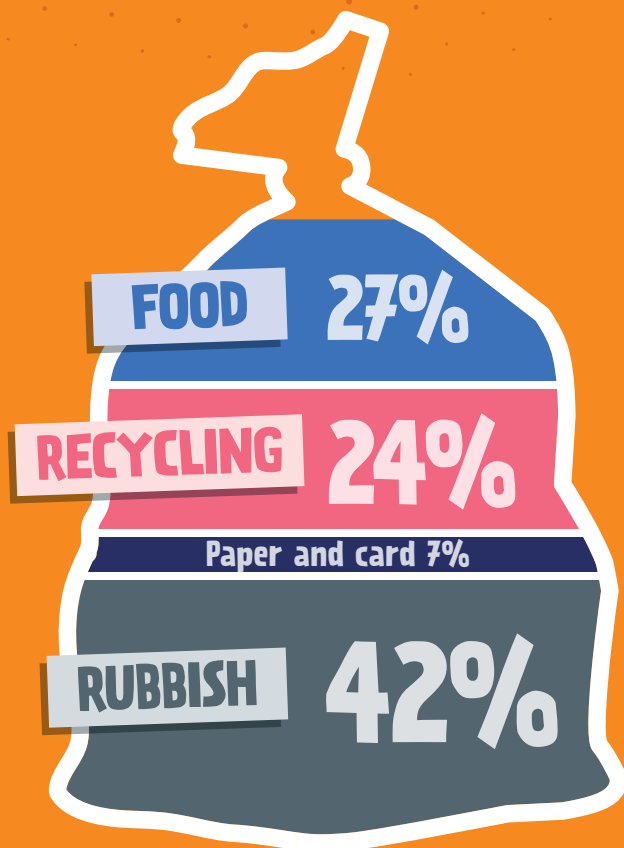
Your guide to

**REDUCING,**

**REUSING & RECYCLING**

# What's all this rubbish?

Every week, this is what an average **BLACK BAG** we collect in Southend contains:



On average 27% will be food waste, and 24% is plastic, glass or metals that could have been recycled in the pink recycling sacks. Additionally nearly 7% will be recyclable paper or card.

Some of this belongs in your household recycling and some, like textiles and small electricals can be recycled if separated in the right way (see page 5 for more details). So your rubbish could be up to 60% smaller if you follow these simple steps:

**Reduce  
Reuse  
Recycle**

**Let's recycle better together.  
For each other. For Southend-on-Sea.**

# Take the ONE BLACK BAG A WEEK challenge

It's simple: put out just **ONE BLACK BAG** of non-recyclable rubbish for collection each week, scan the QR code to find out more and take the pledge.



## Did you know...

Reducing your rubbish is one of the simplest actions you can take today to protect your local environment, whilst also helping Southend reach its target to recycle at least 65% of its waste by 2035 in line with the government targets. You might also be surprised at how much money you could save! (see page 4).

**On average 58% of what we throw away can be recycled but we're currently recycling about 43%.**

If we all recycled properly we could reduce the amount of money spent on disposing waste, leaving more money for other essential services in Southend.

## My new year's resolutions

- ☐ Recycle all I can from around the house
- ☐ Use the food waste recycling service
- ☐ Recycle my old textiles and electricals in clear sacks and carrier bags



Visit [southend.gov.uk/one-bag-a-week](http://southend.gov.uk/one-bag-a-week)  
and pledge to take part in the challenge!

# 1 REDUCE

## REMEMBER THE LITTLE THINGS

From taking a bag with you to the shops, to packing your lunch in reusable tubs, buying your fruit and vegetables loose and saying no to junk mail, you can make a big positive impact every single day.



## DON'T LET YOUR FOOD GO TO WASTE

On average, around **27% of the waste** collected in Southend's black bags is food. With some meal planning, using what you buy and freezing leftovers, the average family could also save just over **£40 per month!**

For those unavoidable leftovers make sure you use your food waste recycling service or try home composting. See **page 7** for more details.



## SWITCH TO REUSABLE NAPPIES



Your baby is likely to need up to 6,000 changes from birth to potty training. Using reusable nappies for your baby can help reduce your household waste by nearly half. It can also save you **around £25 a month.**

Visit [southend.gov.uk/cloth-nappies](https://southend.gov.uk/cloth-nappies) to find out more.

## HAZARDOUS WASTE



Gas canisters, vapes, batteries, electrical equipment, acids and oils are. They can cause explosions and fires during waste collections and treatment processes.

# 2 REUSE

Some things aren't ready to be thrown away so **DON'T BIN IT...**

## ...DONATE IT

to your local charity shop if the items are in good condition.

Some charities also offer **FREE collections** for larger items.



## ...BAG IT

All the textiles recycled in the clear textiles recycling sacks are sorted and when possible reused or shredded and recycled.



## Community Reuse Shop



## ...OR BRING IT

to the Community Reuse Shop located in Stock Road Household Waste and Recycling Centre. The Stock Road Re-use shop accepts a wide range of items including furniture, electrical items, TV's, glass ware/ crockery and bric 'a' brac. Staff at the Leigh Marshes HWRC will also be able to separate items fit for reuse and bring them to the reuse shop.

## Opening times

**Weekdays** (closed Thursday): 9am – 5pm\*

**Weekends:** 8am – 5pm\*

\*4pm between 1st November – 31st January

**Stock Road, Southend-on-Sea, SS2 5QF**

Open all year round except Christmas Day, Boxing Day and New Year's Day.

**For more info visit [southend.gov.uk/hwrc](http://southend.gov.uk/hwrc)**

## ...BOOK IT

If the items are no longer usable and/ or you can't get to the Household Waste and Recycling Centre then book a collection using our popular and accessible bulky waste collection service

Visit **[southend.gov.uk/bulky](http://southend.gov.uk/bulky)** for more info or scan the QR code to book a collection.



are **NOT ALLOWED** in your rubbish or recycling as they are dangerous. Only dispose of these items at the Household Waste and Recycling Centre.

Visit **[southend.gov.uk/one-bag-a-week](http://southend.gov.uk/one-bag-a-week)** and pledge to take part in the challenge!



# 3 RECYCLE

Make sure you **EMPTY** and **RINSE** items before putting them in your pink recycling sacks. Scan the QR code for more info.



[www.southend.gov.uk/recycling](http://www.southend.gov.uk/recycling)

## YES PLEASE

You can recycle these in your pink sacks



Glass bottles and jars



Aerosols and foils



Food and drink cans



Plastic bottles, films and containers



Food and drink cartons



## And these in your blue box

The content of the box can be sent directly to a paper mill in Kent where it will be recycled



Paper and card



## OOPS! NO THANKS

Please **DO NOT** put any of these items in your PINK R



**X** Tissues, nappies and sanitary items



**X** Food wrappers, packets and polystyrene



**X** Electrical items

# FOOD WASTE

**NEED A CADDY?** You can request FREE replacement bins and liners on the MySouthend portal at [my.southend.gov.uk](https://my.southend.gov.uk)

## YES PLEASE



Meat, fish  
and bones



Tea bags and  
coffee grounds



Fruit and  
vegetables



Eggs and dairy  
products



Bread, pasta  
and rice



Plate scrapings



Garden waste collections are also available through a subscription service.  
To sign up visit [southend.gov.uk/gardenwaste](https://southend.gov.uk/gardenwaste)

## K RECYCLING SACKS or FOOD WASTE BIN



**X** Clothes and  
textiles



**X** Soil and  
rubble



**X** Garden  
waste



**X** Oil or  
liquid

Visit [southend.gov.uk/one-bag-a-week](https://southend.gov.uk/one-bag-a-week)  
and pledge to take part in the challenge!

# THE RECYCLING JOURNEY

## THE PINK SACKS RECYCLING JOURNEY



**Materials Recovery Facility**  
(London).



Items are separated by material type.

### PLASTIC

Plastic is separated into different grades, which are reprocessed into **pellets** to create new products.



Glass is melted in a furnace at temperatures of 1,500-1,600°C. The melted glass is used to make new glass bottles

and jars. Other uses for recycled glass include aggregate for road construction, glass fibre and water filtration

### GLASS



### METAL

Metals such as **cans, tins, aerosols** and **foil** are separated by material and processed to create new products.

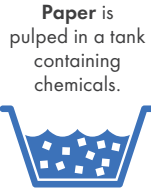


## THE PAPER AND CARD RECYCLING JOURNEY

**Paper mill**  
(Kent).



Paper and card is graded.



Paper is pulped in a tank containing chemicals.

The pulp is cleaned, sprayed on a mesh, pressed, dried and wound on rolls.



**Recycled paper and card** products are manufactured.

## THE FOOD WASTE RECYCLING JOURNEY

**Anaerobic Digestion**  
(East London).



Micromorganisms break down food waste.

The **biogas** produced (methane) is used to **power turbines**.



The leftover digestate is used as a **fertiliser** by farmers.



**Green energy** is produced and fed to the grid to power homes.

find out even more at  
[southend.veolia.co.uk/recycling-journey](https://southend.veolia.co.uk/recycling-journey)